

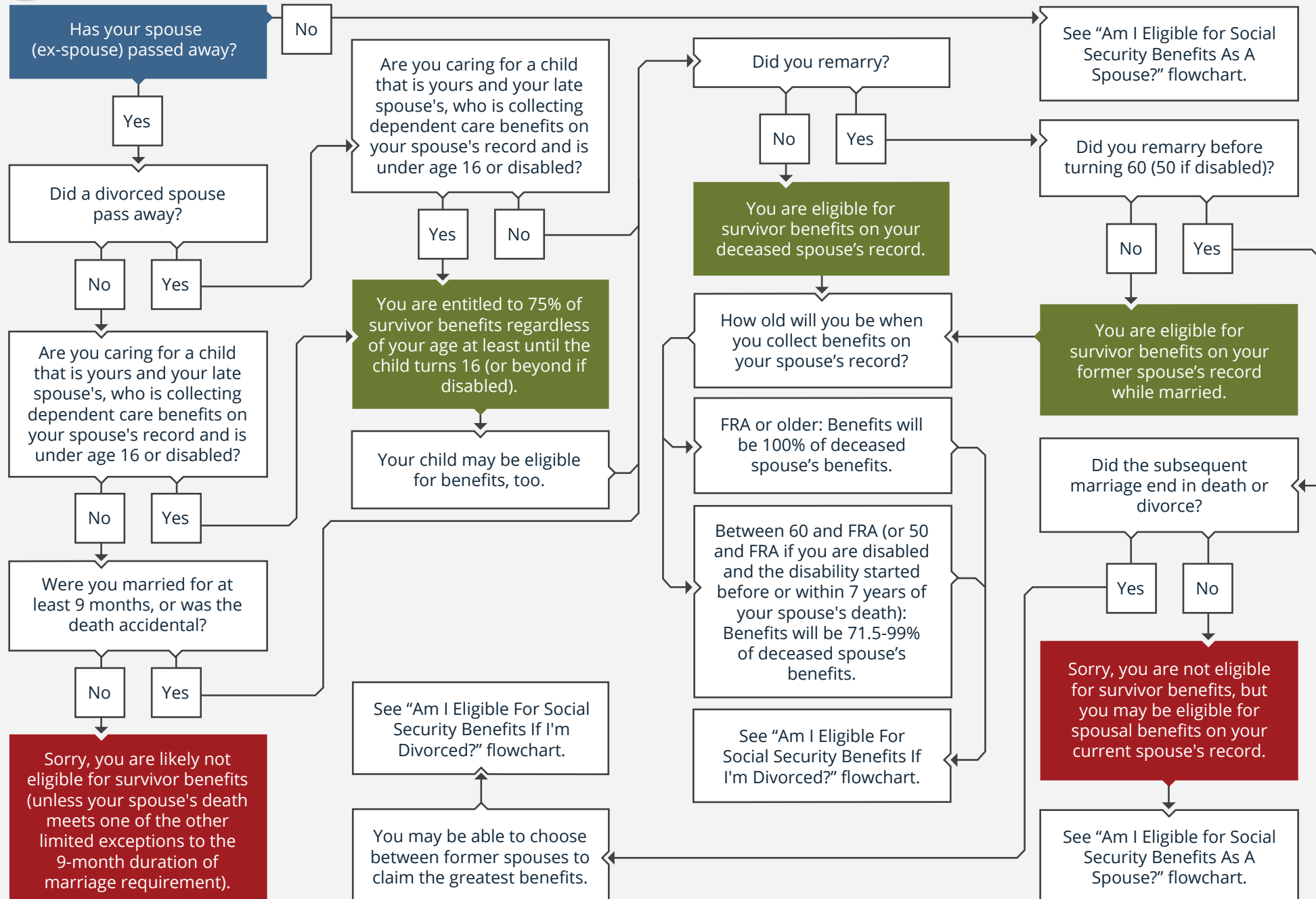
2021 · AM I ELIGIBLE FOR SOCIAL SECURITY BENEFITS AS A SURVIVING SPOUSE?



**THE RETIREMENT
PLANNING GROUP**



Start Here





Disclaimer: Information provided is for educational purposes only and does not constitute investment, legal or tax advice. All examples are hypothetical and for illustrative purposes only. Past performance of any market results is no assurance of future performance. The information contained herein has been obtained from sources deemed reliable but is not guaranteed. Legislation and tax laws are constantly changing, so please reference the date the document was updated for accuracy of information provided.

Please contact The Retirement Planning Group for more complete information based on your personal circumstances and to obtain individual investment advice.

The Retirement Planning Group

4811 W. 136th Street Leawood, KS 66224

contacttrpg@planningretirements.com | 866-498-8898 | www.planningretirements.com